

Maskers are pleased to support



The aim of Simon Says is to provide

INFORMATION

for

**BEREAVED
CHILDREN**

and their families in Hampshire

*If you would like further information about Simon Says
or would like to help please contact us at:*

www.simonsays.org.uk

Patron: BBC presenter Sally Taylor

MASKERS THEATRE COMPANY

Amateur Theatre at its best

Amy's View

by David Hare

Nuffield Theatre

3-6 October 2001

www.maskers.co.uk



Rehearsal Photos By Clive Weeks



WOULD YOU LIKE TO JOIN US?

Maskers Theatre Company was founded 32 years ago and although it still retains a record number of original members, together with their children and even grandchildren, the Company is looking to recruit new members to help keep the Maskers in the spotlight.

In January 2001 we gave the first amateur performance of MISERY by Stephen King here at the Nuffield Theatre, followed by a spectacular open-air production of Moliere's THE HYPOCHONDRIAC at Mottisfont Abbey in July.

We have our own premises - a workshop in Shirley converted with lottery funding where we rehearse, store equipment and perform "workshop productions" for members and guests. Next workshop production is PICASSO AT THE LAPIN AGILE written by Steve Martin which runs from Wednesday 21 to Saturday 24 November at 7.30 pm.

This is followed by MORE CHRISTMAS BAUBLES our traditional seasonal entertainment at Tudor Merchant's Hall in old Southampton from Tuesday 11 to Saturday 15 December at 7.30 pm, featuring actors, singers and musicians from the company.

And looking forward to 2002 - we are delighted to announce our 21st anniversary production at Mottisfont Abbey from Wednesday 17- Saturday 27 July will be a new adaptation of ALICE with specially commissioned music. Lewis Carroll's magical stories have been woven into a deliciously inventive piece of theatre that will delight and intrigue adults and older children. This ambitious project offers plenty of scope for people with acting, carpentry, painting, sewing, electrical skills or just plain enthusiasm.

Interested? Check out our website www.maskers.co.uk for details, or call Membership Secretary Betty Riggs on 023 8047 2619.

DIRECTOR'S NOTES

Some years ago, I saw a production of *Skylight* by David Hare at Salisbury Playhouse. It was a stunning production in all respects, beautifully acted and directed, but I was particularly struck by three things: firstly, by the exquisitely crafted dialogue for which Hare is understandably renowned; secondly, by the empathy with which he explores the female mind and character; and thirdly, by the breathtaking skill of Stella Gonet in delivering a wonderful performance whilst preparing and cooking an entire Spaghetti Bolognese which she and Bill Nighy then proceeded to eat! The memory of those wafting aromas is with me as I write!

And so, some 3 months ago, I found myself in the joyous but fearful position of directing this great play, *Amy's View*, with the huge responsibility of doing justice both to my cast, and the master of his craft, David Hare.

I hope the play will strike as many chords with you as it has with me on this short, but significant, journey. Its themes are universal - grief and betrayal, family relations and conflict, love and loss - all thrown into sharp focus through the relationship between Esme, a successful actress, and Dominic, the up and coming cultural monolith with an agenda that threatens her traditional views on the theatre. Amy, Esme's daughter whose view is that "love conquers all", is the battleground over whom the conflict is played out over a decade and a half.

As in *Skylight*, the characters are not politicians or public figures, but ordinary people, with neighbours, lovers and family. The play is about grief and happiness, about the role of theatre, both as an art form and in modern life; it's about having money and not wanting it, wanting money and not having it, and the tragedy of putting off reconciliation until it's too late. It's about the fundamental 'alone-ness' of the human spirit. That's my view - but I leave the last word with the writer:

"My purpose in writing *Amy's View* was to do something blindingly simple yet still distressingly rare: to put modern women's lives on the stage in a way which I hope women might recognise...."

THE MUSIC

For me, music is an integral part of any production, and for Amy's View, my concept was clear and simple: English, 20th Century, piano. There was the added challenge of finding something to fulfil David Hare's very specific stage direction in Act 4 for 'the overwhelming sound of a string orchestra'. In Gerald Finzi's 'Eclogue', I believe I found the perfect combination of all my desired elements. Originally written as the slow movement of an intended piano concerto, Finzi died before completion, and the 12 minute piece was posthumously published in its own right. I hope you will love it as much as we have come to, with its poignancy of themes and harmonies.

Belinda Drew

BELINDA DREW - Director

Belinda is happy to be directing again for the Maskers - since her last show, *84 Charing Cross Road*, she has devoted more time to acting and has had the opportunity to play some of the great women's parts, notably Roxanne in *Cyrano de Bergerac*, Beatrice in *Much Ado about Nothing*, Gwendoline in *The Importance of Being Earnest* and Helena in *A Midsummer Night's Dream*, all at Mottisfont Abbey. Nuffield appearances include Madame Ranyevskaya in *The Cherry Orchard*. Last year, she won the Southern Daily Echo Curtain Call Award for Best Actress in a Drama for her performance of Lysistrata.



CAST

Dominic	Steve Clark
Amy	Nicky Housham
Evelyn	Mollie Manns
Esme	Ros Liddiard
Frank	Alan Watson
Toby	Steve Tizzard

The action of the play takes place over a period of 16 years

Act 1	The living room of Esme's house, Pangbourne, Berkshire, Summer 1979
Act 2	The same - Summer 1985
Act 3	The same - Summer 1993
Act 4	The backstage of a small Victorian West End theatre, 1995

There will be an interval of 20 minutes between Acts 2 and 3

PRODUCTION TEAM

Director	Belinda Drew
Production Manager	Christine Baker
Stage Manager	Angie Barks
Lighting Design	Clive Weeks, Tony Lawther
Lighting Operators	Nathan Weeks, Graham Dennis
Sound	Lawrie Gee
Properties	Ella Lockett, Gill Buchanan, Irene Shiell
Furniture	Helen Officer, Angela Stansbridge
Wardrobe	Jan Ward
Set design	Peter Liddiard
Set construction	David Jupp assisted by Jim Officer, Graham Buchanan, Ken Hann, Albie Minns and Jez Minns
Marketing and Publicity	Jan Ward, Angela Stansbridge, Lyn Austin
Photography	Clive Weeks
Poster design	Graham Hill

Acknowledgements

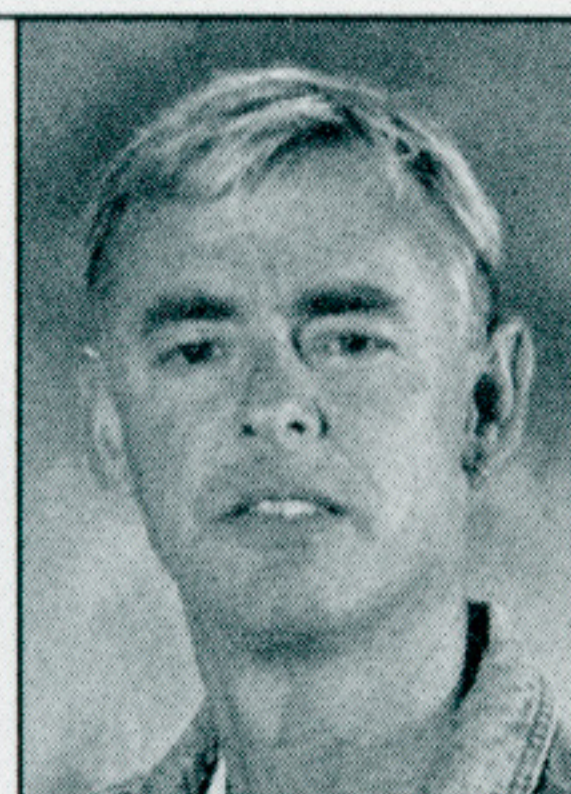
With thanks to everyone who has contributed to the success of this production, especially
Southampton Operatic Society, Leslie Johnson (bicycle), Amber Antiques,
Clocktower Antiques, Fleurs Florists of Swaythling

BIOGRAPHIES

STEVE CLARK - Dominic Tyghe

Exploding onto the drama scene in 1963 with a memorable and definitive Second Sheep in his infant school production of The Nativity, Steve - a Masker for 15 years - was last seen at the Nuffield being upstaged by a very dead and faintly dripping rat. Drawn to the parts of cruelly-dealt heroes meeting with grisly fates (Misery's Paul Sheldon, John Proctor in RAODS' The Crucible, Grandier in The Devils), Steve has also appeared as Gary in Noises Off, Angel Clare in Tess, and Lopakhin in The Cherry Orchard - all thrilling literally several Southampton theatregoers.

Steve is delighted to be back on stage with Ros and Nicky, and says a big Thanks to Sue.



NICKY HOUSHAM - Amy

After studying drama at Queen Mary's College, Basingstoke (1994), Nicky has performed with a number of theatre companies. During 2000 she worked for Murder Mystery Southern Ltd., taking on a variety of characters at murder mystery days and dinner parties! Nicky received the Maskers 'David Bartlett Award' for Best Supporting Actor in 1999 for her performance of Dunyasha in The Cherry Orchard. She has twice been nominated for Best Comedy Actress at the Echo Curtain Call Awards, for performances of Juliette in Thieves Carnival (1999), and Lady Teazle in A School for Scandal (2000). Nicky spent time earlier this year travelling the east coast of Australia and plans to spend 8 months on 2003 on a voluntary development programme with secondary children in Tanzania. Nicky is looking forward to her third appearance at the Nuffield and the challenging role of Amy!



MOLLIE MANNIS - Evelyn

A Masker since 1970, Mollie has been involved in countless productions both as actor and director. Her most celebrated role for the Maskers was as Helene Hanf in 84 Charing Cross Road (also directed by Belinda Drew), and her most recent - Beline in The Hypochondriac at Mottisfont. Director's credits include Wild Oats at Mottisfont and Cider with Rosie at the Nuffield Theatre. Mollie wishes it to be known that ageing up for Evelyn has been her most difficult role so far!



ROS LIDDIARD - Esme

Ros became a Masker 15 years ago, when she played The Mother in the one-act comedy Have You Met Our Rabbit? She found herself cast opposite the awesome and energetic talent of Alan Watson's family pet rabbit, 'The Colonel'. Ros feels lucky to have survived with both dignity and limbs intact.



Other Maskers' productions include Rose (Rose), Noises Off (Dotty Otley), The Rover (Angellica Bianca). With Maskers she directed A Day in the Death of Joe Egg for Nuffield audiences. Other major roles include Kate in Dancing at Lughnasa and Katherina in The Taming of the Shrew, both for A Motley Crew. Ros was delighted to join the Chorus of Greek Women in Patrick Sandfords' The Bacchae. Her somewhat nomadic theatrical career has seen her playing The Witch of the North & Aunt Em in The Wizard of Oz in Brighton, The Nurse in Romeo & Juliet at Westminster Theatre, London, and she has just completed a nationwide tour of Having a Ball by Alan Bleasdale. TV credits include Peak Practice and Big Meg, Little Meg.

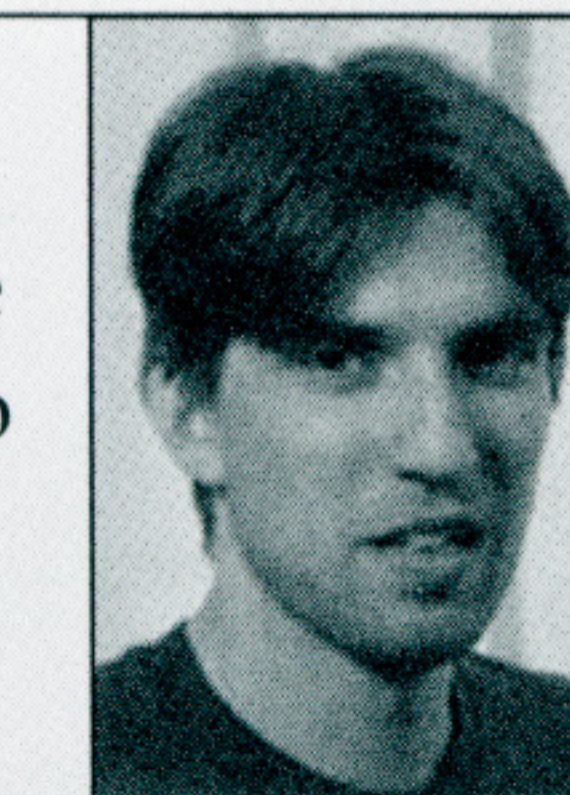
ALAN WATSON - Frank

Having played a eunuch, a satyr, a bull and, at this year's Maskers' production at Mottisfont, a gormless idiot, Alan is grateful to Belinda for offering him his greatest acting challenge yet; a normal, middle-class Englishman.



STEVE TIZZARD - Toby

This is Steve's first performance with The Maskers. He was on holiday when this was written, so is a bit of a mystery. We know he played Vincenzo in Taming of the Shrew at Exeter University but to find out more you'll have to ask him in the bar after the show.



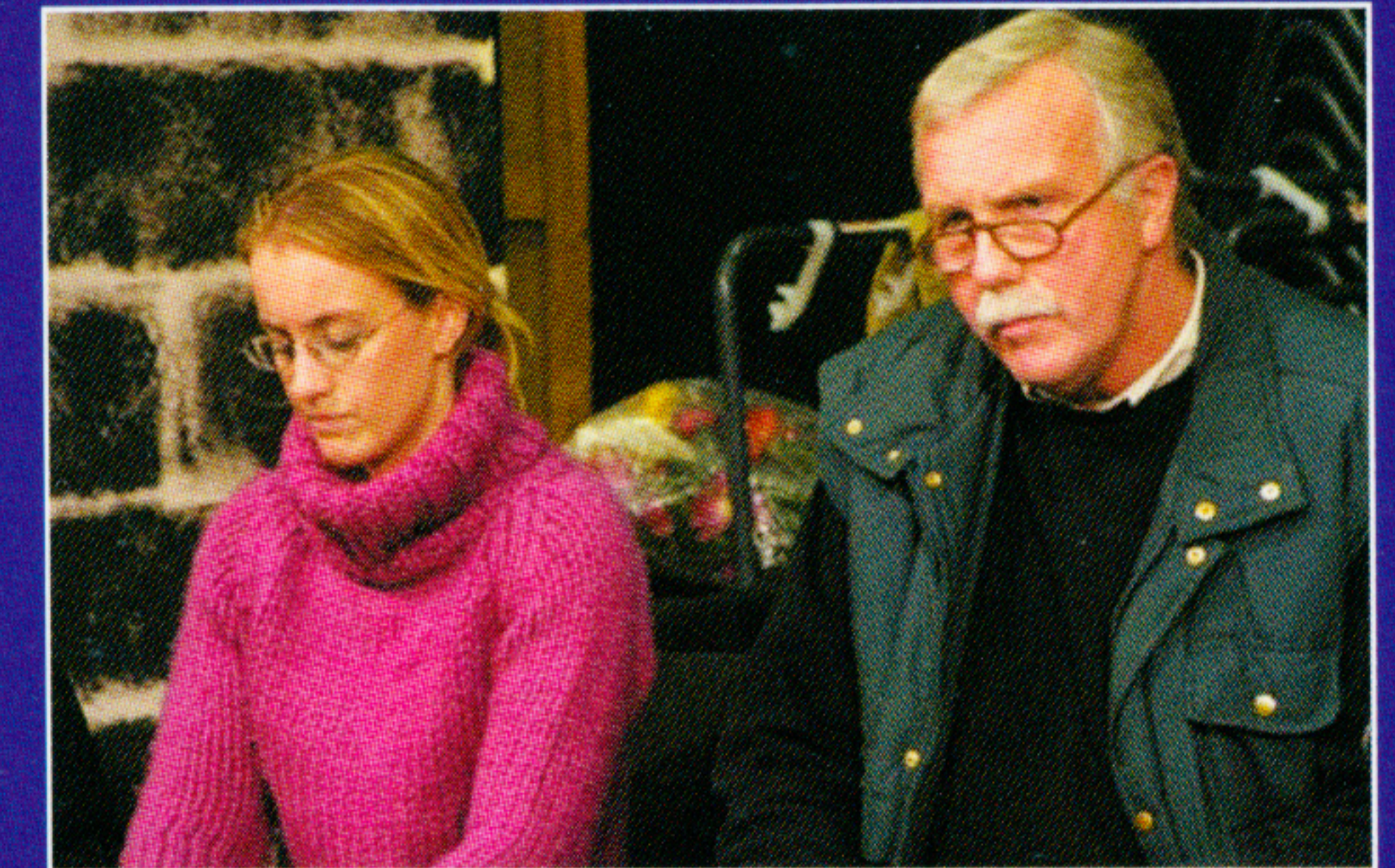
NUFFIELD THEATRE

The use of cameras, tape recorders or mobile phones in the theatre is forbidden. The management reserves the right to refuse admission, and to make any alterations to the cast which may be rendered necessary by illness or other unavoidable causes. In accordance with the requirements of the licensing authority:

1. The audience may leave at the end of the performance by all exit doors.
2. All gangways, corridors, staircases and passageways which afford a means of exit shall be kept entirely free from obstruction.
3. Persons shall not be permitted to stand or sit in any of the gangways except in positions authorised by the licensing authority and in numbers indicated in the notices exhibited in those positions.
4. The safety curtain shall be lowered and raised at each performance in the presence of the audience.

With thanks to the Nuffield Theatre staff

Artistic Director	Patrick Sandford
Administrative Director	Kate Anderson
Associate Director	Daniel Buckroyd
Assistant to the Directors	Alison Thurley
Financial Accountant	Peter Lea
Production Manager	Nicky Wingfield
Assistant Production Manager	Ben Ponting
Chief Electrician	Greg Head
Deputy Chief Electrician	Peter Gibson
Front of House Manager	Sarah-Jane Browning
Sales Office Supervisor	Vic Fabian



Rehearsal Photos

